

for location of fences
see diagram opposite page
(isolat)

A. F. PARKER.

30th + wash an = check (Strike)

90°00' LHS South P.S. on Hub

Just over Hub P.S. on 31st Adams

77+12⁰⁰ Out Hub for C of 30th Street

90°00' R + north at 759.00

P.S. on Hub @ washth + 31st St

69+53⁰⁰ Just over Hub C 31st St + Adams on

produced 926.0 to C Weber land,

on Hub washth + 31st line 31st St

Just over Hub C Adams + 31st St

Hub 7872 = C of Adams + 31st St

P.S. on Mt #1 90°00' R + East St

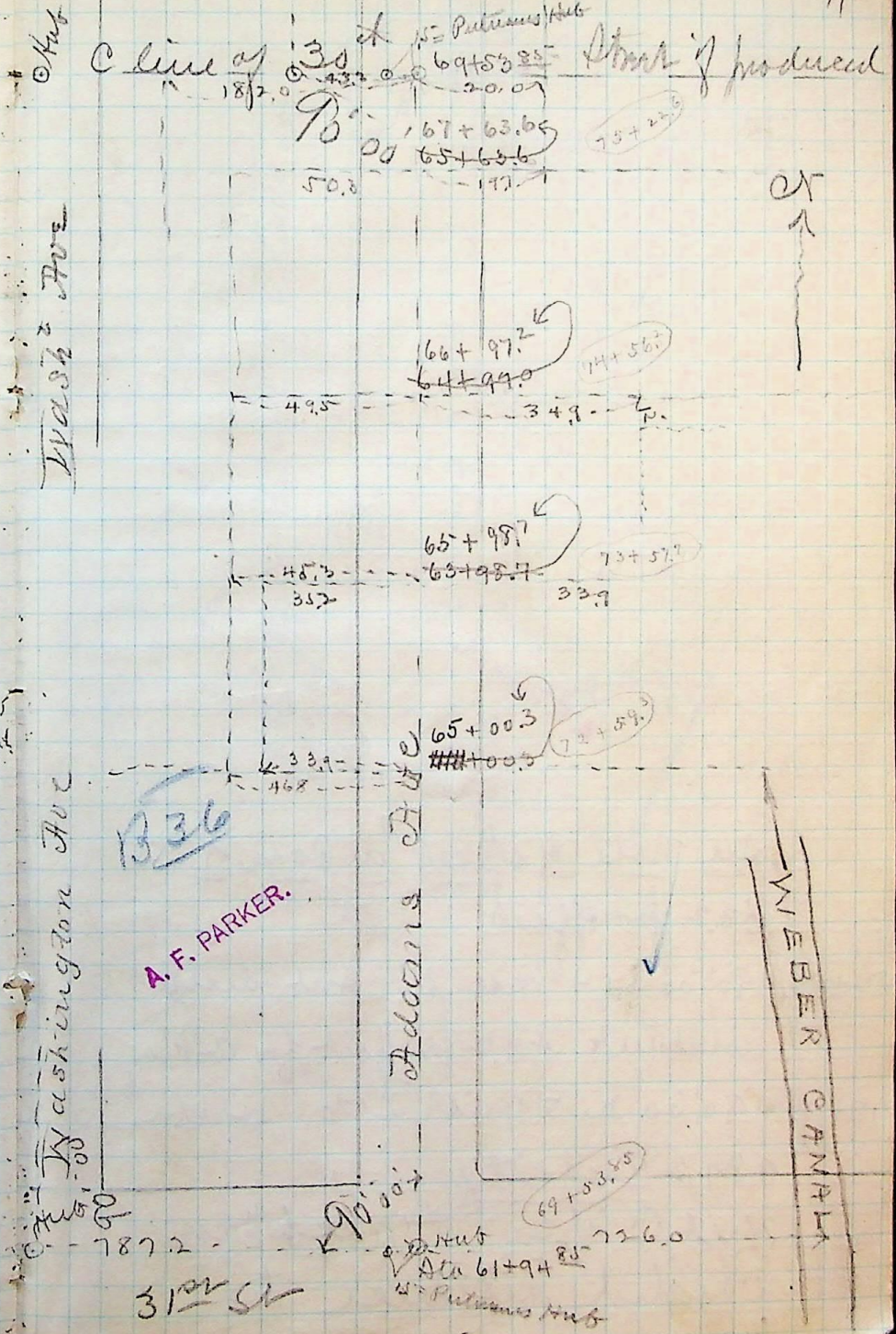
Just over Hub C 31st St + washth an

South of 28th Street from 31st St north to 28th

ending of Adams Avenue
Survey for the opening + ex-
Friday P.M. Oct 4th 1889

69+53⁰⁰

B36



Hub

Washington Ave

Washington Ave

Hub

C line of 30th St

B36

A. F. PARKER.

Adams St

WEBER CANAL

↑

15 = Putman's Hub
69+53.85
20.07
67+63.65
65+63.6
-197

Strike if produced
75+23.5

66+97.2
64+99.0
49.5
349
144+56.1

65+98.7
63+98.7
48.5
352
339
70+57.7

65+00.3
###+00.3
339
462
72+59.3

90°00'
Hub
7872
31st St
Hub
61+94.85
726.0
Putman's Hub